



rssd

26.-27.11.2022.

12.

**RALLY SHOW
SANTA DOMENICA**

sveta
NEDELJA



Valvoline™

powered by



SUPPLEMENTARY REGULATIONS



MORE THAN RALLY LOVE

**12. RALLY SHOW
SANTA DOMENICA**





12. RALLY SHOW SANTA DOMENICA



CONTENT

1.	PAST OVERALL WINNERS	4
2.	INTRODUCTION AND ORGANIZATION	8
3.	PROGRAMME	10
4.	ENTRIES AND INSURANCE	11
5.	CARS AND SAFETY EQUIPMENT	13
6.	TYRES AND FUEL	14
7.	IDENTIFICATION AND ADVERTISING	14
8.	RECCE ROADBOOK	15
9.	ADMINISTRATIVE CHECKS AND SCRUTINEERING	15
10.	OTHER PROCEDURES	16
11.	PENALTIES	17
12.	IDENTIFICATION OF OFFICIALS	18
13.	PRIZES	18
14.	FINAL PROVISIONS	19

	APPENDIX 1 – ITINERARY	21
	APPENDIX 2 – COMPETITORS RELATIONS OFFICER (CRO)	22
	APPENDIX 3 – 3 rd ROBERT VOJVODIĆ MEMORIAL	22

THE ORIGINAL MOTOR OIL

Osobna vozila

Motocikli, skuter

Laka gospodarska vozila

Kamioni, autobusi

Poljoprivredna mehanizacija

Građevinska mehanizacija

Industrija

Marine program

Tectyl



www.valvoline.com.hr



TRUSTED FOR 150 YEARS

AUTHORISED DISTRIBUTOR

Val-int d.o.o., Sv. Nedelja

+385 1 3373 112, info@val-int.hr



www.val-int.hr



VAŠ PARTNER U EKOLOGIJI



12. RALLY SHOW SANTA DOMENICA




 26.-27.11.2022.
12. RALLY SHOW
 SANTA DOMENICA
 sveta
 Nedelja
 powered by



1. PAST OVERALL WINNERS




JURAJ ŠEBALJ (HR) – TONI KLINC (HR)
MITSUBISHI LANCER EVO IX




IVAN GORAN ČIBEJ (HR) – SAŠA BITTERMAN (HR)
SUBARU IMPREZA STI




IVAN GORAN ČIBEJ (HR) – SAŠA BITTERMAN (HR)
ŠKODA OCTAVIA WRC EVO III




BEPPLO HARRACH (AUT) – DOMINIK JAHN (AUT)
MITSUBISHI LANCER EVO IX RA



12. RALLY SHOW SANTA DOMENICA




 26.-27.11.2022.
12. RALLY SHOW
 SANTA DOMENICA
 sveta
 Nedelja
 powered by



1. PAST OVERALL WINNERS


5. Rally SHOW
 29.-30./11/2014
 SANTA DOMENICA



BEPP0 HARRACH (AUT) – DOMINIK JAHN (AUT)
FORD FIESTA RS


6. Rally SHOW
 28.-29./11/2015
 SANTA DOMENICA



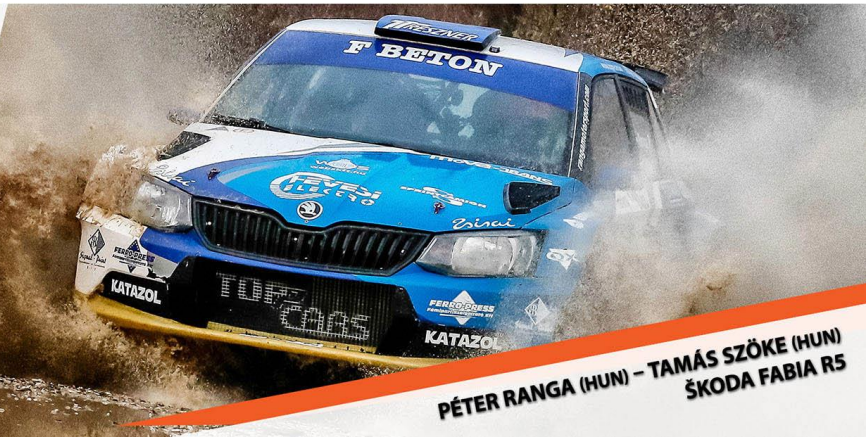
BEPP0 HARRACH (AUT) – DOMINIK JAHN (AUT)
FORD FIESTA RS


7. Rally SHOW
 26.-27./11/2016
 SANTA DOMENICA



BEPP0 HARRACH (AUT) – DOMINIK JAHN (AUT)
FORD FIESTA RS


8 RALLY SHOW
 SANTA DOMENICA
 25.-26./11/2017



PÉTER RANGA (HUN) – TAMÁS SZÓKE (HUN)
ŠKODA FABIA RS



12. RALLY SHOW SANTA DOMENICA




 26.-27.11.2022.
12. RALLY SHOW
 SANTA DOMENICA
 sveta nedelja 
 powered by  

1. PAST OVERALL WINNERS




9. RALLY SHOW
 SANTA DOMENICA
 23.-25.11.2018.

**SIMON WAGNER (AUT) – GERALD WINTER (AUT)
ŠKODA FABIA R5**




10. RALLY SHOW
 SANTA DOMENICA
 K&S papir 22.-24.11.2019.

**PÉTER RANGA (HUN) – VIKTOR BÁN (HUN)
ŠKODA FABIA R5**




11. RALLY SHOW
 SANTA DOMENICA
 sveta nedelja 
 POWERED BY: 

**SIMON WAGNER (AUT) – PIA ŠUMER (SVN)
ŠKODA FABIA RALLY2 EVO**




12. RALLY SHOW
 SANTA DOMENICA
 sveta nedelja 
 powered by  

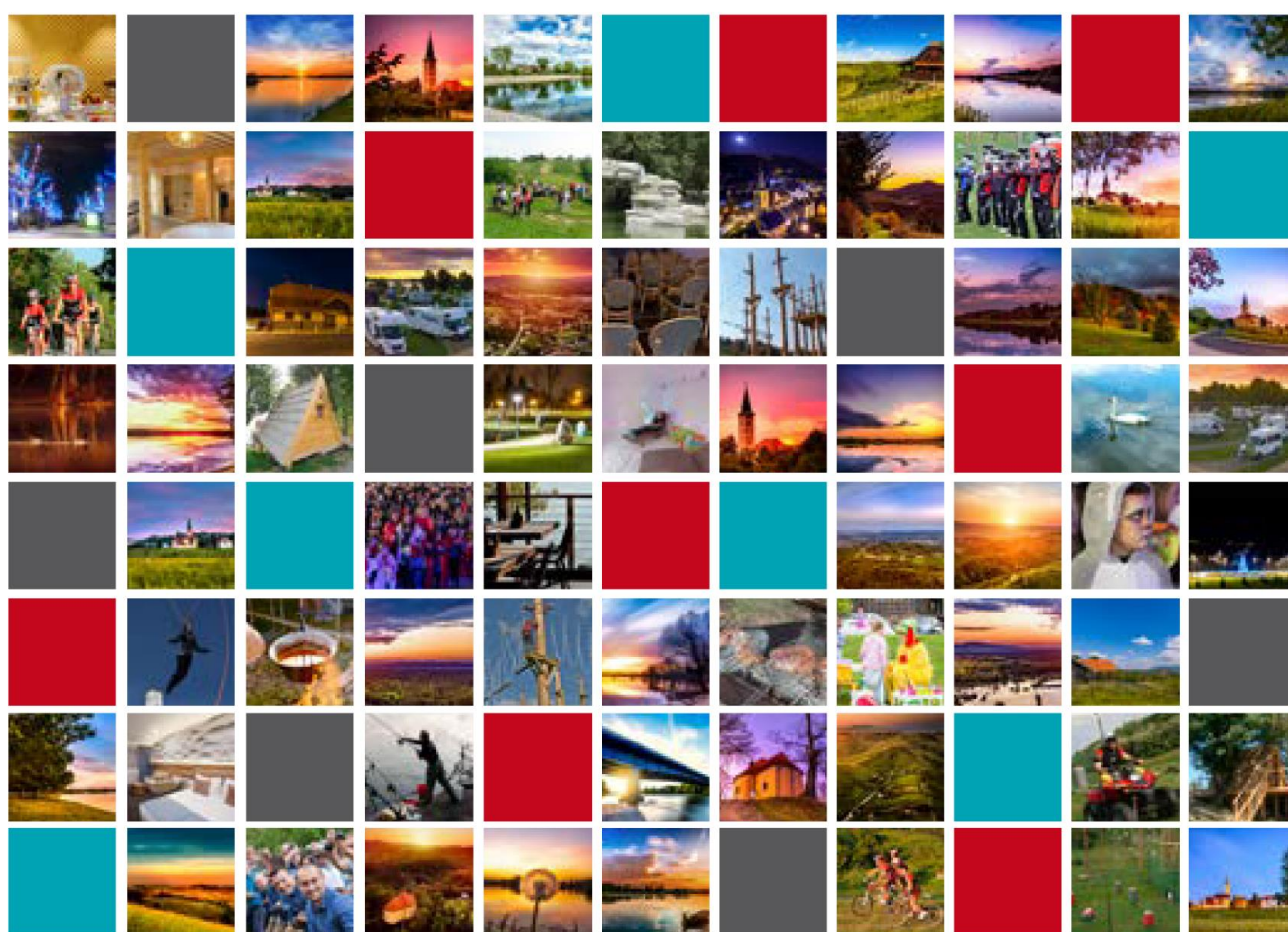
**JESTE LI VI SLJEDEĆI POBJEDNIK?
ARE YOU THE NEXT WINNER?**



12. RALLY SHOW SANTA DOMENICA



Sveta Nedelja



OSJETI PRIRODU POMIRIŠI SREĆU UŽIVAJ ŽIVOT ZAGRLI TRADICIJU
FEEL NATURE SMELL HAPPINESS ENJOY LIFE HUG TRADITION



12. RALLY SHOW SANTA DOMENICA



2. INTRODUCTION AND ORGANIZATION

2.1 Introduction

This competition will comply with Appendix A03 for Rally Show Manifestations 2022 issued by the Croatian Car and Kart Federation (CCKF) and these Supplementary Regulations.

Modifications, amendments, and/or changes to these Supplementary Regulations will be announced only by numbered and dated Official Information and Bulletins (issued by the organizer or The Stewards of the meeting).

The official Rally language is Croatian, so in the case of misinterpretation of the Supplementary Regulations in other languages, the Croatian version will be taken as authoritative.

2.2 Special Stages

The competition consists of special stages and liaison sections between them which are closed for public traffic.

Special stages will be driven on a gravel surface.

Number of special stages: 4

A total distance of special stages: 37,08 km

The length of the Shakedown course: 3,14 km

If the special stage cannot be started before 16:20 h, if there is significant damage to the special stage surface or any other force majeure, Stewards of the Rally shall decide on the further continuation of the competition.

Should competition is to be discontinued, final results will be announced based on available results from a last regular special stage driven.

A decision on continuation/discontinuation shall be announced within 10 minutes after Steward's Meeting at Official Notice Board and Official Rally Announcement.

2.3 Visa Number

CCKF visa no.: 62/2022

Issued on: 23 September 2022.

2.4 Organizer's name, address and contact details

AUTO KARTING CLUB SVETA NEDELJA

Address: Vinogradska 17a, 10431 Sveta Nedelja-Croatia

E-mail: info@rssd.hr

Web: rssd.hr

Facebook: facebook.com/RallyShowSantaDomenica

Instagram: instagram.com/rally_santadomenica

Mob/WhatsApp: +385 98 161 5636 Daniel Vojvodić (speaks: HRV, ENG)

Mob/WhatsApp: +385 99 415 7043 Tajana Vojvodić - Pinky (speaks: HRV, ENG)

Mob/WhatsApp: +385 91 600 1116 Dražen Kappler Stare (speaks: HRV, ENG)

Mob/WhatsApp: +36 30 4994 241 Andrea Borjus (speaks: HRV, HUN)

Mob/WhatsApp: +39 339 8337 429 Silvano Vitiello (speaks: SRB, ITA)

2.5 Technical Co-organizer's name, address and contact details

AUTO CLUB DELTA TIMING - Zagreb

Address: Poljana Zvonimira Dražića 8, 10000 Zagreb-Croatia

E-mail: ured@delta-timing.hr

Web: delta-timing.hr

Facebook: facebook.com/deltatiming

Mob/WhatsApp: +385 99 365 3579 Daut Damarija (speaks: HRV, ENG)

E-mail: daut@rssd.hr

2.6 Organizational Committee

Chairman: Daniel Vojvodić

Members: Tajana Vojvodić, Boris Beraković, Nenad Lončarić, Dražen Kappler-Stare, Majda Lojo Pavlović, Matija Lončarić, Lana Sutlović, Kristina Harapin, Martin Horvatić, Andrea Rastowsky, Siniša Pšeničnik, Zvonimir Oković, Antun Strelec, Daut Damarija, Sanja Čikeš, Davor Malezija, Krešimir Majhen



12. RALLY SHOW SANTA DOMENICA



2.7 Senior Officials

CCKF Observer	Dragan Serden	S 0021
Rally Stewards		
Chairman	Zvonimir Harapin	S 0351
Members	Branimir Hranilović	S 0008
	Antun Strelec	N 0051
Clerk of the Course (CoC)	Daut Damarija	S 0149
Clerk of the Course Assistants (CoC)	Krešimir Majhen	S 1085
	Davor Malezija	S 2399
Secretary of the Rally	Sanja Čikeš	S 0310
Chief Safety Officer	Katarina Žanić-Štuglin	N 2432
Chief Safety	Zvonimir Oković	N 0163
Special Stage's Officer	Krešimir Pavelić	S 0134
	Bojan Todorović	S 0033
Special Stage's Officer Assistant's	Željko Struk	S 1768
	Nataša Kljuić	N 0515
Chief of Administrative Checks	Marijan Horvatović	S 0013
Chief Scrutineer	Hrvoje Ivančević	N 4160
	Dario Vid	S 0311
Scrutineer Assistant's	Nataša Kljuić	N 0515
Competitors Relations Officer (CRO)	Doc.dr.sc. Mario Ćuk, dr. med.	
Chief Medical Officer	PFB (JVP) Samobor	
Fire and rescue service	Mladen Glumac	K 2732
Chief of Radio Communications	Δ timing ZAGREB	3/22 4/22
Timekeeping and Data Processing	Denis Dudak	N 3084
Chief of Timekeeping and Data Processing	Ivica Tisaj	N 2629
Chief of logistics	Ivo Marinović	K 4280
Chief of Service Park	Dražen Dumić – Vučna služba „Draško“	
Chiefs of towing services	Ivan Mesec – Mlakar Viličari d.o.o.	
	CMRS (HGSS) Samobor	
Chief of diving services	Kristina Harapin	
Press centre and Public relations officer		

2.8 Rally HQ and contact details

Up to 25 November 2022: AUTO KARTING CLUB SVETA NEDELJA, Vinogradska 17a, 10431 Sveta Nedelja

26-27 November 2022: Rally HQ-Service Park - gravel pits Savršćak, Savršćak

GPS coordinates: [45°50.145N 15°44.755E](https://www.google.com/maps/place/45°50.145'N+15°44.755'E)

E-mail: info@rssd.hr | Web: rssd.hr

Mob/WhatsApp: +385 91 511 7246	Nataša Kljuić	(speaks: HRV, ENG)
Mob/WhatsApp: +385 98 161 5636	Daniel Vojvodić	(speaks: HRV, ENG)
Mob/WhatsApp: +385 99 415 7043	Tajana Vojvodić - Pinky	(speaks: HRV, ENG)
Mob/WhatsApp: +36 30 4994 241	Andrea Borjus	(speaks: HRV, HUN)
Mob/WhatsApp: +39 339 8337 429	Silvano Vitiello	(speaks: SRB, ITA)

2.9 Service park

Service Park surface is gravel and is located at the Savršćak, gravel pits Savršćak | GPS coordinates: [45°50.145N 15°44.755E](https://www.google.com/maps/place/45°50.145'N+15°44.755'E). Service Park entry is possible from 25 November 2022 at 12:00 hrs.

Contact person: **Ivo Marinović** | Mob/WhatsApp: +385 91 4466 337 | E-mail: service@rssd.hr

Only vehicles with adequate markings (provided by Organizers) are allowed in Service Park.

All other vehicles will have to be removed outside of Service Area. The organizer isn't able to ensure an electrical power supply.

2.10 Official Notice Board

All decisions, notices, and results will be published on the Official Notice Board. 26-27 November 2022: Rally HQ-Service Park - gravel pits Savršćak, Savršćak | GPS coordinates: [45°50.145N 15°44.755E](https://www.google.com/maps/place/45°50.145'N+15°44.755'E)

"Online Notice Board", for direct event information please download [Sportity mobile application](#) and insert this password: **RSSD22**



12. RALLY SHOW SANTA DOMENICA



3. PROGRAMME

3.1 Schedule before rally week

MONDAY – 10 NOVEMBER 2022		
22:00	Publication of the Supplementary Regulations	rssd.hr
	Opening day for entries	
	Opening day for Media Accreditation application	
WEDNESDAY – 16 NOVEMBER 2022		
24:00	Closing date for entries	rssd.hr
THURSDAY – 17 NOVEMBER 2022		
23:00	Publication of the Entry list	rssd.hr
23:00	Publishing of the Roadbook and RSSD spectators guide	
24:00	Closing date for Media Accreditation	

3.2 Schedule during rally week

TUESDAY – 22 NOVEMBER 2022		
12:00	Press Conference	Tourist information centre Sveta Nedelja, Stilinovićeveva 1, Sveta Nedelja GPS 45°47.815N 15°46.610E
FRIDAY – 25 NOVEMBER 2022		
12:00	Service Park Opening	Savršćak - gravel pits Savršćak GPS 45°50.195N 15°44.735E
16:00-19:00	Issuing of competition numbers and other materials	Catering facility - Service Park gravel pits Savršćak GPS 45°50.140N 15°44.755E
SATURDAY – 26 NOVEMBER 2022		
08:30-10:00	Issuing of competition numbers and other materials	Catering facility - Service Park gravel pits Savršćak GPS 45°50.140N 15°44.755E
09:30-11:00	Recce of Special Stages 1-4 - Savršćak Arena	Savršćak gravel pits GPS 45°50.054N 15°44.855E
10:00-11:30	Administrative checks (facultative) Priority for crews applied for Shakedown	Rally HQ – Service Park gravel pits Savršćak GPS 45°50.145N 15°44.755E
11:45-14:45	Administrative checks (according to predefined schedule)	
10:00-11:30	Scrutineering (facultative) Priority for crews applied for Shakedown	Service Park - gravel pits Savršćak GPS 45°50.195N 15°44.735E
11:45-14:45	Scrutineering (according to predefined schedule)	
13:00-13:45	Recce of Shakedown	Savršćak gravel pits GPS 45°50.054N 15°44.855E
14:00-17:00	Shakedown	
17:00	First Stewards' meeting	Rally HQ – Service Park Gravel pits Savršćak GPS 45°50.145N 15°44.755E
18:00	Publishing of Ceremonial Start List	Online Notice Board
19:00	Selection of starting positions	Ante Starčević Square, Sveta Nedelja GPS 45°47.801N 15°46.541E
19:30	Ceremonial Start	
20:00	Publishing of the Rally Start List	Online Notice Board



12. RALLY SHOW SANTA DOMENICA



SUNDAY – 27 NOVEMBER 2022

08:00	Start of Special Stage 1 Savršćak Arena 1	Savršćak gravel pits GPS 45°50.054N 15°44.855E
10:00	Start of Special Stage 2 Savršćak Arena 2	
12:30	Start of Special Stage 3 Savršćak Arena 3	
14:30	Start of Special Stage 4 Savršćak Arena 4	
After SS - 4	Publication of unofficial results	Online Notice Board
10 min. after SS – 4 finish	Second Stewards' meeting and Publication of official results	Rally HQ – Service Park Gravel pits Savršćak GPS 45°50.145N 15°44.755E
17:00	Prize Giving Ceremony	Catering facility - Service Park gravel pits Savršćak GPS 45°50.140N 15°44.755E

4. ENTRIES AND INSURANCE

4.1 Entry procedure

Those who wish to take part in the 12 Rally Show Santa Domenica 2022 must fill out the [Entry Form](#) published at [rssd.hr](#) (Competitors section) and send it duly completed before the closing date for entries.

The closing date for entries is **16 November 2022 - 24:00 hrs.**

The received Entry and paid Entry fee are necessary for inclusion in the Entry List.

An Organizer without prior timely obligations is not obliged to assign a crew on the Entry List.

The crews (driver and co-driver) who wish to participate will be allowed to compete without possession of their National Automobile Federation License. In contrast, a valid driver's license is mandatory for all drivers.

Participants without a valid driver's license can participate only as co-driver members of the crew.

The above options are not applicable for drivers under 18 or over 60.

Drivers aged 16 to 18 on the start day of the competition (26 November 2022) will be allowed to compete only by possessing their National Automobile Federation License, and they must provide a public notary document (which permits participation in Autosport) notarized by their parents at Administrative checks.

Participants aged 16 to 18 on the start day of the competition (26 November 2022) without possessing the National Automobile Federation License can compete only as Co-Drivers. They must provide a public notary document (which permits participation in Autosport) notarized by parents at Administrative checks.

There will be a possibility of a double start (two different crews with the same car and the start of the same driver/Co-driver within two different rally crews), with a separate Entry Form and a separate fee for each crew.

4.2 Number of entrants

The number of entrants is limited to **90**.

60 + additional **30** for Priority crews who received Organizer's „wildcard“ invitations.

If more than 90 entries are received, the Organizers reserve the right to extend this number or decide which entries among the Non-Priority crews will be not accepted or transferred to the waiting list.

Crews with "wild card" invitations will automatically be included in the Entry List.

The organizer has the right to reject the application of a particular crew without giving reasons why it was done.



12. RALLY SHOW SANTA DOMENICA



4.3 Entry fee

The Entry fee containing non-obligatory advertisements is payable according to the table below as a voluntary contribution to the organization of the event.

The Entry fee is expressed in kunas and euros. When calculating, a fixed conversion rate of 7.53450 kn for 1.00 € is used.

CLOSING DATE FOR ENTRIES: 16 NOVEMBER 2022 - 24:00	
Up to 16 November 2022	3.013,80 kn / 400,00 €
From 17 November 2022	4.520,70 kn / 600,00 €

Entry Fee for **junior drivers** (drivers under the age of 23) is **1.883,63 kn / 250,00 € until 16 November 2022** or **2.637,08 kn / 350,00 € from 17 November 2022**.

Should the crew refuse non-obligatory advertisement by Organizers, the double Entry fee shall be applied.

Entry will be duly received only if the total membership fee is paid or if the organizer decides otherwise.

Evidence of payment should be sent to the organizer before 26 November 2022 or shown at the Administrative check.

Entry fee payment details:

IBAN HR4023400091110424857 „PRIVREDNA BANKA ZAGREB“ D.D. SWIFT: PBZGHR2X (BIC)	AKK SVETA NEDELJA Vinogradska 17a, 10431 Sveta Nedelja - Hrvatska
Payment description: 12RSSD2022 Entry fee + first and last name of the driver	

Each crew applied to the competition (if it has not paid the Entry fee) and does not participate, is obligated to pay the organizer's costs of 1.506,90 kn / 200,00 €.

The entry fee for the **Shakedown of 3 allowed passes** is **753,45 kn / 100,00 €**.

There is a possibility of **2 additional passes** with an additional fee of **376,73 kn / 50,00 €**.

The Shakedown fee is payable in cash at the administrative checks on 26 November 2022 as a voluntary contribution to the event's organisation.

4.4 Checking and Entry fee payment

Checking of the Entry fee payment will be held on 25 November 2022 from **16:00 to 19:00** hrs and 26 November 2022 from **08:30 to 10:00** hrs.

Catering facility - Service park, gravel pits Savršćak

GPS coordinates: [45°50.140N 15°44.755E](#)

4.5 Refunds

The Entry fee shall be refunded only to candidates whose entry has not been accepted or in the case of rally cancellation.

Partial, 50% refunds shall be provided to competitors unable to participate due to „force majeure“ only if Organizers are notified on a specific circumstance before 16 November 2022 - 24:00 hrs.

4.6 Insurance

With the organizer's insurance policy, the competitor is insured against the "third party" liability by the existing laws in Croatia at a minimum amount of 750.000,00 kn / 9.954.210,63 € to cover "any damages incurred by the vehicle participating in the competition (facilities, etc.).

An entrant, driver, and co-driver participate at their own risk and signs the document „Declaration of Indemnity“ on an Entry Form.

An entrant participating in the rally waives the right to reimbursement from the Organizers for any accidents that could happen to themselves or their mechanic and guests in the area of competition.

Organizers don't accept any liability towards entrants for injuries or property damages that might occur.



12. RALLY SHOW SANTA DOMENICA



5. CARS AND SAFETY EQUIPMENT

5.1 Cars

Cars don't need to be registered, as the competition runs entirely on roads closed to public traffic. For non-homologated cars with pre-charging (with a built-in turbocharger or mechanical compressor), the engine's volume (powered by gasoline) is calculated by multiplying the nominal volume of the engine with a coefficient of 1.7. For cars with precharged diesel engines and front-wheel drive, no volume correction is performed, only the nominal volume of the engine is taken into account.

The use of a turbocharger restrictor is optional, but it is recommended use.

Historic cars are all cars older than 30 years or cars whose homologation is older than 30 years.

All cars must be in compliance with racing safety regulations and must have the following safety devices installed which will be controlled at scrutineering:

- ✓ safety roll-cage (according to FIA standards)
- ✓ handheld fire extinguisher with a valid check-up date
- ✓ racing seats (can be with expired FIA homologation)
- ✓ racing harnesses (can be with expired FIA homologation)
- ✓ front bonnet pins
- ✓ marked towing eyes or straps on the front and rear of the car
- ✓ battery disconnection main switch

5.2 Classes

Vehicles will be assigned to one of the five classes listed below. According to valid or expired homologation. Or without homologation.

RSSD 1	Rally1 WRC Rally2 Rally2 Kit R5 S2000 RRC N5 RN4 RX1 Rallycross
RSSD 2	Rally3 N4 R4 RGT A8 without homologation >2001 cm ³ Historic >2001 cm ³
RSSD 3	Rally4 RC4/A/B R3/C/T/D R2/B/C A7 S1600 RX3 Rallycross without homologation 1601-2000 cm ³ Historic 1601 – 2000 cm ³
RSSD 4	A6 Kit Car 1401–1600 cm ³ N3 without homologation 1400–1600 cm ³ Historic 1401–1600 cm ³
RSSD 5	Rally5 R1/A/B A5 Kit Car < 1400 ccm N2 N1 without homologation < 1400 cm ³ Historic < 1400 cm ³

The event will also feature six Trophies as follow:

VALVOLINE MASTERS Trophy	drivers over the age of 50
JUNIOR Trophy	drivers under the age of 23
HOOSIER CO-DRIVER LADIES Trophy	female co-drivers
PRODUCTION CAR Trophy	N4 R4 cars
RWD Trophy	RWD (rear wheel drive) cars
HISTORIC Trophy	cars older than 30 years

Possible appellations related to class deployments are accepted from Start List publication until the start of a rally. After that, they shall not be considered.

5.3 Safety equipment

Competitors' safety equipment is subject to control at scrutineering and before the start of special stages.

Competitors (driver and co-driver) are required to wear safety clothing according to FIA 8856-2000 or FIA 1986 Standard:

- ✓ safety racing suit
- ✓ safety racing balaclava, underwear-undershirt, long pants and socks
- ✓ safety racing boots
- ✓ safety racing gloves (only drivers)

Competitors must wear helmets that meet the requirements of the standards listed in FIA Technical List No. 25 of FIA Appendix L or that the FIA recognized by 30 June 2000.

HANS® (head and neck support) device isn't mandatory but is recommended.



12. RALLY SHOW SANTA DOMENICA



6. TYRES AND FUEL

6.1 Tyres and fuel

Tyres and fuel choices are free.

7. IDENTIFICATION AND ADVERTISING

7.1 Identifikacija

Competition numbers supplied by the Organizers must appear on the car during the rally and be clean and visible at every Special Stage start.

Two front door panels measuring 67 cm wide by 17 cm high contained a number box which shall always be at the front of the panel.

Numerals will be 14 cm high and with a stroke width of 2 cm.

The remainder of this door panel is reserved for the organizer.

Two Competition numbers for each rear side window shall be 20 cm high with a stroke width of at least 25 mm.



SUBARU OUTBACK
Spreman za sve terene.
Krenite na nezaboravno putovanje.



subaru.hr
f /subaruhrvatska

AUTO LONČARIĆ d.o.o.

Franje Tuđmana 81, 10431 Sveta Nedelja, tel. 01 33 77 555, subaru@auto-loncaric.hr

Kombinirane vrijednosti WLTP za Outback: potrošnja 8,6 (l/100km), emisija CO₂ 193 (g/km). Za sve dodatne informacije obratite se svom ovlaštenom Subaru zastupniku. Slika je simbolična.



12. RALLY SHOW SANTA DOMENICA



7.2 Issuing of the start numbers and other materials

Issuing of the start numbers and other materials will be held on **25 November 2022 from 16:00 to 19:00 hrs** and **26 November 2022 from 08:30 to 10:00 hrs**.

Catering facility - Service park, gravel pits Savršćak – GPS [45°50.140N 15°44.755E](#)

7.3 Advertising

All advertising must comply with Croatian Laws and mustn't be offensive in any way.

The advertising of tobacco products and alcoholic beverages is forbidden in Croatia.

Details regarding advertising shall be announced via Official Information or Bulletin.

Should the crew refuse non-obligatory advertisement, the double-entry fee shall be applied as per Article 4.3.

The Organizers reserve the exclusive right to place any kind of advertising in the Rally Headquarters and along the route of the Rally.

Any kind of advertising activity has to be agreed upon with the Organizers upfront.

8. RECCE | ROADBOOK

8.1 Recce

Recce of SS 1-4 Savršćak Arena will be held on 26 November 2022 from 09:30 to 11:00 hrs.

Savršćak – GPS start coordinates: [45°50.096N 15°44.640E](#)

The number for the recce car, provided by the organizer, must be placed at the top in the centre of the windscreen, and it must be visible during the entire Recce.

The Recce speed limit is 50 km/h.

8.2 Roadbook

The Roadbook will be published on 17 November 2022 at 23:00 hrs via the [Online Notice Board](#).

A printed Roadbook will not be issued.

9. ADMINISTRATIVE CHECKS AND SCRUTINEERING

9.1 Required Documents:

- ✓ Fully filled and signed Entry Form (the printed Entry Form is available during the distribution of starting numbers and other materials; it must be personally brought to Verification and Scrutineering)
- ✓ Safety Equipment Form
- ✓ Evidence of entry fee payment
- ✓ Driver and Co-driver passports or IDs
- ✓ Car identification (mandatory for Shakedown participants and if available for others)
- ✓ A license issued by the corresponding ASN (for licensed participants and all drivers aged 16-18)
- ✓ Valid driver's license for both crew members according to Article 4.1.
- ✓ Public notary document notarized by parents for participants aged 16-18 according to Article 4.1.

9.2 Administrative checks and Scrutineering

Administrative checks will be held on 26 November 2022 from 11:45 to 14:45 hrs.

Rally HQ – Service Park gravel pits Savršćak

GPS coordinates: [45°50.140N 15°44.755E](#)

Scrutineering will be held on 26 November 2022 from 11:45 to 14:45 hrs.

Service Park - gravel pits Savršćak

GPS coordinates: [45°50.140N 15°44.755E](#)

Administrative checks and Scrutineering will be organized according to the schedule published within Entry confirmation on 17 November 2022.

Facultative Administrative checks and Scrutineering will be held at their respective locations on 26 November 2022 from 10:00 to 11:30 hrs.

Priority for crews applied for Shakedown.



12. RALLY SHOW SANTA DOMENICA



10. OTHER PROCEDURES

10.1 Driver's meeting

The document "Driver's meeting" will be published digitally on the [Online Notice Board](#), and the link will be sent by the organizer to all competitors in the Entry Confirmation.

10.2 Timing

The timing for the Shakedown and Special Stages will be in tenths of a second (10th part of a second).

10.3 Start order selection

According to the results of Shakedown, the selection of start positions for the first 10 verified crews according to the Entry list will be held on 26 November 2022 at 19:00 hours.

Ante Starčević Square, Sveta Nedelja - GPS coordinates: [45°47.801N 15°46.541E](#)

10.4 Ceremonial Start

An obligatory Ceremonial start will be held on 26 November 2022 at 19:30 hrs.

Ante Starčević Square, Sveta Nedelja - GPS coordinates: [45°47.801N 15°46.541E](#)

Crews are not requested to wear safety clothing and racing overalls during Ceremonial Start.

All crews will start according to the published Start list for the Ceremonial start, which will be published on 17 November 2022 at 17:30 hrs via [Online Notice Board](#).

10.5 Proceedings

The start of the rally is from Service Park (TC-1 Service Out).

Crews are obligated to check in at the time control (TC 1 – Service park exit) on time listed on the start list, keeping the existing order (in a case when two crews have an identical minute), where they will be provided with a Time Card.

After TC check, crews shall receive a provisional start time which will be approx. 3 minutes later.

At the Special Stage start, there will be no start time entry in Time Card.

Time accomplished together with check-in time for next TC shall be added at STOP position after Special Stage finish, just before Service Park entry.

Starting outside of the scheduled time without penalty will be possible only after the Clerk's approval. Stoppage of Special Stage will be signalized by using the **red flag**.

Once the red flag is spotted driver must significantly reduce speed and follow Marshall's or other Official's instructions.

Should Special Stage be temporarily interrupted, stopped crews are not going to repeat the Stage but will be given an estimated time according to Steward's decision instead.

Crews are obliged to inform the Clerk of the Course or Secretary of the Rally at Rally HQ of an intention to restart and they will be provided with a new time at which they need to check in at the Time Control before the next Special Stage start.

During the competition, damaged cars along the Special Stage can be removed only by the organizer's tow trucks with the Clerks' permission.

If the crew wants to tow their cars, which are left at the Special stage, on their own, that will be possible only after the end of a rally and the dissolution of all rally services unless the Clerk of the course does not make a different decision.

10.6 Procedure on Special Stage Start

The start interval is approx. **40 seconds**, depending on the stage situation.

The electronic start procedure will be clearly visible to crews from the starting line and will be displayed in the form of a clock showing daytime and a sequential red/green light systems as seen in the picture.

After Marshall adjusts the car to the starting line, a crew will be referred to the light system where the red light will be on.

Drivers must be ready for a start within 20 seconds.

The start time is marked by green light.

After that, the driver must start the Special stage within 5 seconds.





12. RALLY SHOW SANTA DOMENICA



Manual starting procedure

In case the manual starting procedure is used, the Marshall at the start will give the crew a start sign with a green flag.

After that, the driver must start the Special stage within 5 seconds.

The starting line is equipped with a photoelectric cell (positioned 50 cm after the start line), which is connected to the printer with a measuring device, and the time measurement begins with the passing of the car through the photoelectric cell.

10.7 Barrier (chicane)

Due to safety reasons, the barrier (chicane) will be positioned at the Shakedown route.

A Barrier (chicane) will be formed of straw bales or barrels.

A list of judges of fact at barrier (chicane) positions (appointed by the Rally Stewards) will be published on the Official notice board.

Incorrect barrier (chicanes) passage will be penalized by the Clerk of the Course according to Article 11.2.

10.8 Classification

Classification will be determined by the aggregate of the times achieved in each of 4 Special stages or less according to Article 2.2.

The crew must start and finish the last Special Stage of competition to be listed in the final results of the rally.

The evaluation of the longest jump will determine the winning crew in this segment of the competition.

10.9 Shakedown

Shakedown will be held on 26 November 2022 from 14:00 to 17:00 hrs.

Savršćak – start GPS coordinates: [45°50.096N 15°44.640E](https://www.google.com/maps/place/45°50.096N+15°44.640E)

Shakedown is available to all crews with previous applications stated on the Entry Form with the Shakedown Entry fee according to Article 4.3.

The first 5 Shakedown runs will be considered for the intended procedures/prizes.

The length of the Shakedown stage is **3,14 km** which will be held on a gravel surface.

The Shakedown start interval is **30 seconds**.

Shakedown will be held on roads closed for public traffic.

Only competitors, who passed Administrative Checks and Scrutineering, can participate in Shakedown.

Only registered driver listed on the Entry Form, with a valid Driver's License (excluding drivers aged 16.-18.) is eligible to drive a car (Article 4.1).

A Co-driver can be anyone (older than 18 years), who will sign the Entry Form and „Declaration of Indemnity“ of any responsibility and right to compensation from the organizer that might happen as a consequence of the incident.

Each crew member is required to use safety equipment according to Article 5.2.

All crews eligible to start a Shakedown will receive a dedicated Time Card at the Administrative checks.

Shakedown recce will be held on 26 November 2022 from 13:00 to 13:45 hrs, allowed with competition cars (marked duly by start numbers and obligatory/supplementary advertising stickers fitted) with speed limited to **50 km/h**.

If the Organizer estimates that the number of entered crews is not sufficient, Shakedown will be cancelled and registered participants will be informed about it via Official Information.

10.10 Official time during the competition

An official time during the competition will be available on telephone number **+385 18095**.

11. PENALTIES

11.1 Money Fines

Every participant of the 12 Rally Showa Santa Domenica 2022 caught at the rally route before 26 November 2022 and/or out of the schedule of recce, will be treated as a person in an offence.

Any kind of training on rally routes, wanton driving, and driving faster than permitted while recce is strictly forbidden. During competition and recce, it is strictly forbidden to drive along lawn areas of the embankment of the Sava river and Gradna brook.

A participant who breaks previous regulations will be fined by the Clerk of the course in an amount of 1.506,90 kn / 200,00 € and a time penalty according to Article 11.2.

Fine must be paid to the organizer before the start of the competition if the violation is committed before the start of the competition, recce or before the start of the Special Stage that will start after a committed violation.

Otherwise, the crew won't be allowed to start the competition or start the Special stage.



12. RALLY SHOW SANTA DOMENICA



11.2 Time Penalties

- Non-appearance at Ceremonial Start: 3 minutes
- Each minute late in Time Control: 10 seconds
- Each minute early in Time Control: 10 seconds
- In case a crew does not complete the full lap it shall be penalized by receiving the worst class time achieved under "regular" conditions plus one minute
- Missing to have Special Stage time entry after the finish of SS by crews fault: 5 minutes
- Start refusal in an officially given time: 10 minutes
- Driving on a lawn area along the embankment of the Sava and Gradna river: 5 minutes
- Move (flip over) one part of the barrier (chicane): 5 seconds
- Drive through or passing the barrier (chicane) partly: 20 seconds
- Not passing (avoiding) the barrier (chicane): 30 seconds
- For each second spent on a special stage: 1 second

11.3 Disqualification

- Participation of unregistered persons

12. IDENTIFICATIONS OF OFFICIALS

- Safety Officer: Numbered tabard with yellow markings
- Chief Safety: Tabard with red markings
- Special Stages Officer: Tabard with red markings
- Safety & Radio Points Marshal: Numbered tabard with orange markings
- Timekeepers: Numbered tabard with blue markings
- Marshalls and Security staff: Numbered tabard with green markings
- Competitors Relations Officer: CRO sign tabard with pink markings

13. PRIZES

Prizes (cups) will be awarded for:

- **OVERALL** classification: crews conquering 1st-3rd place & Croatian crews conquering 1st-3rd place
- **RSSD 2** class classification: crews conquering 1st-3rd place & the best placed Croatian crew
- **RSSD 3** class classification: crews conquering 1st-3rd place & the best placed Croatian crew
- **RSSD 4** class classification: crews conquering 1st-3rd place & the best placed Croatian crew
- **RSSD 5** class classification: crews conquering 1st-3rd place & the best placed Croatian crew

- **HOOSIER CO-DRIVER LADIES** Trophy: 3 best-placed female co-drivers in the overall classification
- **JUNIOR** Trophy: 3 best-placed drivers under the age of 23 in the overall classification
- **PRODUCTION CAR** Trophy: Crews in N4/R4 cars for conquering a 1st-3rd place in the overall classification
- **RWD** Trophy: crews in RWD cars for conquering a 1st-3rd place in the overall classification
- **VALVOLINE MASTER** Trophy: 3 best-placed drivers over the age of 50 in the overall classification
- Crew evaluated for the longest jump: discretionary rated by organizers

Additional prizes will be announced in the Official Information or Bulletin.

The prizegiving ceremony will be held on 27 November 2022 at 17:00 hrs.

Catering facility - Service park, gravel pits Savrščak.

GPS coordinates: [45°50.145N 15°44.755E](https://www.google.com/maps/place/45°50.145N+15°44.755E)

It is a point of honour that all participants should attend the Prize giving ceremony.



12. RALLY SHOW SANTA DOMENICA



14. FINAL PROVISIONS

Clerk of the Course and the Stewards of the Meeting are responsible for the provisions of this Supplementary Regulations.

Stewards of the Meeting are competent for deciding on any relevant contentious situations.

Decisions adopted by The Stewards of the Meeting, an objection, complaint, and/or appeal cannot be submitted.

By accepting the privilian, by signing the Entry Form for the 12 Rally Show Santa Domenica 2022, ie completing and sending the online Entry Form, the participants will voluntarily and unambiguously give consent for the collection and processing of all personal data for the purpose of carrying out the sporting competition

RALLY SECRETARY

Sanja Čikeš – S 0310

CLERK OF THE COURSE

Daut Damarija – S 0149

FIA – SPECTATOR SAFETY	FIA – MEDIA SAFETY	FIA RALLY MEDIA SAFETY ON STAGES 2018



Love Samobor



How beautiful Samobor is! Its proximity to the capital gives it a charm of country life, the way it does to Tibur, Tivoli, Versailles, Schonbrunn or Winsdor.



www.samobor.hr

Its surroundings are a happy combination of highlands and a plain, meadow and forest, garden and wilderness, river and mountain, village and hamlet, town and country. Samobor is one of the most Croatian places of Croatia.

— *Antun Gustav Matoš*



Sve što Vaš auto treba

Bosch Car Service Purić



Servis osobnih i dostavnih vozila

SERVIS & PRODAJA

Injektori, visokotlačne pumpe & turbokompresori



PURIĆ

Purić d.o.o. A. Hebranga 54, 10430 Samobor  +385 1 3368 120  info@puric.hr

www.puric.hr



12. RALLY SHOW SANTA DOMENICA



APPENDIX 1 – ITINERARY



ITINERARY - 12 Rally Show Santa Domenica 2022

Sunrise 07:12 - Sunset 16:16

Sunday 27 November 2022

TC SS	Location	SS km	Liaison distance km	Total km	Time allowed	1st car due
TC 1	Service out					7:57
SS 1	Savršćak Arena 1	9,27	0,25		3	8:00
SP A	Service park Savršćak		1,50	11,02		
TC 2	Service out				117	9:57
SS 2	Savršćak Arena 2	9,27	0,25		3	10:00
SP B	Service park Savršćak		1,50	11,02		
TC 3	Service out				147	12:27
SS 3	Savršćak Arena 3	9,27	0,25		3	12:30
SP C	Service park Savršćak		1,50	11,02		
TC 4	Service out				117	14:27
SS 4	Savršćak Arena 4	9,27	0,25		3	14:30
	Service park Savršćak		1,50	11,02		
Arrival Total		37,08	7,00	44,08		

POWERED BY:





12. RALLY SHOW SANTA DOMENICA



APPENDIX 2 – COMPETITORS RELATIONS OFFICER (CRO)

Name, photo and schedule of Competitors Relation Officer (CRO).



Nataša Kljuić (speaks: HRV, ENG)
Mob/WhatsApp: +385 91 511 7246

All crews can find me at the following places according to the following schedule:

SATURDAY – 26 NOVEMBER 2022	
10:00-18:00	Rally HQ-Service park, gravel pits Savršćak GPS 45°50.145N 15°44.755E
SUNDAY – 27 NOVEMBER 2022	
07:00-08:00	Rally HQ-Service park, gravel pits Savršćak GPS 45°50.145N 15°44.755E
08:00-16:00	STOP position on SS 1, 2, 3 and 4 - GPS 45°50.327N 15°44.650E . During Special Stage breaks - Rally HQ-Service park, gravel pits Savršćak - GPS 45°50.145N 15°44.755E
16:00-17:00	Rally HQ-Service park, gravel pits Savršćak GPS 45°50.145N 15°44.755E

APPENDIX 3 – 3rd ROBERT VOJVODIĆ MEMORIAL

3rd Robert Vojvodić Memorial is organized as part of the 12 Rally Show Santa Domenica 2022 as a tribute to a memorable friend and colleague, Robert Vojvodić. One of the Auto Karting Club founders was Sveta Nedelja and Rally Show Santa Domenica.

3rd Robert Vojvodić Memorial special award will be given to the crew who make record stage time of the Shakedown stage in the overall classification.

The prizegiving of the 3rd Robert Vojvodić Memorial special award will be held on 26 November 2022, right after the Start order selection.

Ante Starčević Square, Sveta Nedelja | GPS [45°47.801N 15°46.541E](#).



#R5SD #RALLYSANTADOMENICA #MORETHANRALLYLOVE #BEPARTOFT